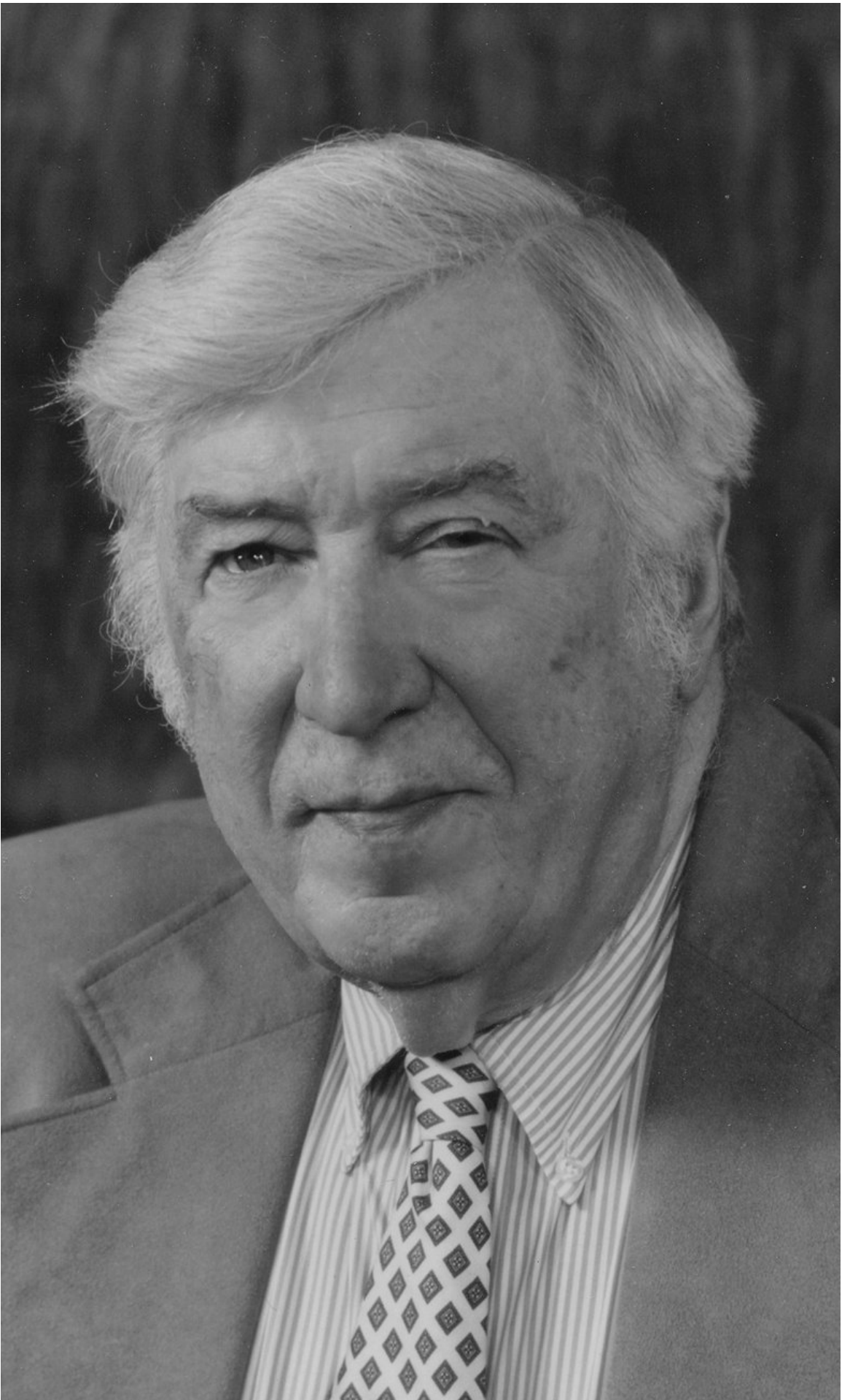


# Guntner Schuller Biography and Works



**am**

G. Schirmer and  
Associated Music  
Publishers

Gunther Schuller's orchestral works include some of the classics of the modern repertoire written for the major orchestras of the world. Prominent among these are several masterful examples in the "Concerto for Orchestra" genre, though not all of them take that title. The Boston Symphony Orchestra and James Levine premiered *Where the Word Ends* in February 2009. Semyon Bychkov and the WDR Symphony Orchestra brought *Where the Word Ends* to the 2010 Proms in London. An earlier work is *Spectra* (1958), alongside such works as the *Concerto for Orchestra No. 1: Gala Music* (1966), written for the Chicago Symphony Orchestra; *Concerto for Orchestra No. 2* (1976) for the National Symphony Orchestra; and *Farbenspiel (Concerto for Orchestra No. 3)* (1985), written for the Berlin Philharmonic. The title of the latter, translatable as "play of colors," echoes the visual metaphor of *Spectra*.

Only one of Schuller's large orchestral pieces takes the generic title of "symphony": his colorful *Symphony*, written in 1965 for the Dallas Symphony Orchestra and premiered that year. Schuller himself, however, has described his *Of Reminiscences and Reflections* (1993) as a "symphony for large orchestra." Written for the Louisville Orchestra and winner of the 1994 Pulitzer Prize in Music, *Of Reminiscences and Reflections* is Schuller's large-scale memorial to his wife of 49 years, Marjorie Black. (Another orchestral tribute to Marjorie is *The Past Is In the Present*, written for the centennial of the Cincinnati Symphony and premiered in May 1994.) One of his first works performed by a major orchestra was his *Symphony for Brass and Percussion*, played in 1949 by Mitropoulos and the New York Philharmonic; his *Symphony No. 3, In Praise of Winds* (1981) is also for wind ensemble. He has also written a *Chamber Symphony* and a work for solo organ titled, simply, *Symphony*.

Concertos and concertante works for solo or small ensemble with orchestra form a large subgroup within Schuller's output. With his two piano concertos (1962 and 1981), two violin concertos (1976 and 1991), two horn concertos (1943 and 1976), and concertos for trumpet, for flute, and for viola, Schuller has championed as soloists unusual but deserving instruments, including alto saxophone, bassoon, contrabassoon, organ, and double bass. He has shown a predilection for works combining small ensemble and orchestra in his classic

*Contrasts for Wind Quintet and Orchestra* (1961), *Concerto Festivo for Brass Quintet and Orchestra*, and the *Concerto for String Quartet and Orchestra*, to name a few. For concert band are *Diptych for Brass Quintet and Concert Band* (1967), *Eine Kleine Posaunemusik* for trombone and band (1980), and *Song and Dance* for violin and band (1990).

As in his concertos, Schuller's chamber music is for a range of both traditional and non-traditional forces. These works appear frequently on the programs of local and internationally known ensembles throughout the United States, Europe, and Japan. His *String Quartet No. 3* (1986) is prominent in the repertoire of, and has been recorded by, the Emerson String Quartet, and the Juilliard Quartet has championed his *String Quartet No. 4* (2002). The outstanding, exotic mixed-media work *Symbiosis* (1957) for violin, piano, and percussion, written for a Metropolitan Opera Orchestra violinist and his wife, a dancer, is but one example of Schuller's embrace of unusual performance opportunities and instrumental combinations.

Not to be overlooked are Schuller's original jazz compositions such as *Teardrop* and *Jumpin' in the Future*, works that epitomize the composer's "Third Stream" approach, which combines the total-chromatic language of Schoenberg and the structural sophistication of the contemporary classical composer with the ensemble fluidity and swing of jazz.

An educator of extraordinary influence, Schuller served on the faculties of the Manhattan School of Music and Yale University; he was, for many years, head of contemporary music activities (succeeding Aaron Copland) as well as a director of the Tanglewood Music Center, and served as President of the New England Conservatory of Music. He is the author of "The Swing Era: The Development of Jazz, 1930-1945," "Early Jazz: Its Roots and Musical Development," "The Complete Conductor," and many other books. In October 2011, University of Rochester Press released the first volume of his memoirs, "Gunther Schuller: A Life in Pursuit of Music and Beauty."

His music is published by Associated Music Publishers.

— September 2012

All material © G. Schirmer/AMP

# Opera and Music Theatre

**The Fisherman and His Wife** (1970) 1h 0'  
Text: (English) Libretto by John Updike after the Grimm fairytale.  
Solo: Soprano, Tenor, Bass  
1(pic,af1)1(ca)1(Ebcl,bcl).asx+barsx.1(cbn)/2111/2perc/egtr.hp.cel(pf).eorg/str  
*Performance materials on rental*

**The Visitation** (1966)  
Text: (English) Libretto by the composer after a motive by Franz Kafka.  
Solo: 5 Baritones, 3 Basses, 2 Mezzo Sopranos, 2 Sopranos, 6 Tenors; Bass Baritone chorus  
3(pic,af1)3(ca)3(Ebcl,bcl)3(cbn)/4331/pf/str; tp; jazz combo: tpt.tbn/perc/pf/db  
*Performance materials on rental*  
*Libretto 50225430 sale*

## Orchestra

**American Triptych** (1965) 14'  
3(pic).3(ca).3(bcl).3(cbn)/4331/timp.3perc/hp/str  
*Performance materials on rental*  
*Score 50237370 sale*

**And They All Played Ragtime** (1992) 20'  
2+pic.2+ca.4(2bcl+cbcl)3(cbn)/4331/timp.4perc/pf(cel+syn)/str  
*Performance materials on rental*

**An Arc Ascending** (1996) 9'  
3(af1:bf1)+pic.2(obda)+ca+heck.3(2bcl)+cbcl.3(cbn)/4331/timp.5perc/pf(cel).hp/str  
*Performance materials on rental*

**Bagatelle: With Swing** (2010) 3' 30"  
3(pic).3(ca).3(bcl).3(cbn)/4.3.3.1/3perc/pf.hp/str  
*Performance materials on rental*

**Capriccio Stravagante** (1972) 19'  
3(3pic)2+ca.2+Ebcl+bcl.3(cbn)/4431/timp.5perc/cel.hp.hpd.pf/str  
*Performance materials on rental*

**Chamber Symphony** (1989) 14'  
1+pic.2(ca).2(bcl).2(cbn)/1111/hp/str  
*Performance materials on rental*

**Composition in Three Parts** (1963) 16'  
44(pic)3(ca)2+Ebcl+bcl.3(cbn)/4431/timp.3perc/hp.pf/str  
*Performance materials on rental*

**Concerto da camera** (1971) 16'  
111+bcl.1/1110/2perc/cel.hp.pf/str(1.0.1.1.1)  
*Performance materials on rental*

**Concerto da camera No. 2** (2002) 23'  
2200/0220/perc/hp/str  
*Performance materials on rental*

**Concerto for Orchestra No. 1 [Gala Music]** (1966) 25'  
3(2pic)2+ca.2+bcl.2+cbn/4431/timp.6perc/cel(org).2hp.pf/str  
*Performance materials on rental*

**Concerto for Orchestra No. 2** (1976) 22'  
4(4pic,af1)4(ca,obda)5(ebcl,3bcl,cbcl,asx)4(cbn)/4441/timp.5perc/cel.hp.pf/str  
*Performance materials on rental*  
*Score 50239300 sale*

**Consequents** (1969) 17'  
3(2pic,af1)2+ca.2+Ebcl+bcl.2+cbn/4431/timp.4perc/hp.pf/str  
*Performance materials on rental*

**Dramatic Overture** (1951) 9'  
3(2pic)2+ca.2+Ebcl+bcl.2+cbn/4331/timp.4perc/cel(pf).2hp/str  
*Performance materials on rental*  
*Score 50238660 sale*

**Dreamscape** (2012) 12'  
4(4pic,af1).3+ca.3(bcl)+bcl.3+cbn/6.4.4.1/6perc/2hp.pf(cel)/str(14.14.12.10.7)  
*Performance materials on rental*

**Encounters** (2003) 23' 30"  
Solo: six voices [opt], alto saxophone, tenor saxophone, trumpet  
Jazz Band: 5 reeds, 4 tpt, 4 tbn, dmkit, egtr(gtr), 2 db;  
Orchestra: 4(2pic,af1).4(2ca,heck).5(2Ebcl,alto cl,2bcl,Bbcbcl).asx.4(cbn)/6.4+bass tpt)3+btbn.2/5perc/2pf(1/4-tone apart).cel.2hp/str  
*Performance materials on rental*

**Farbenspiel [Concerto for Orchestra No. 3]** (1985) 25'  
4(2pic)4(2ca)4(bcl,cbcl)4(cbn)/4441/timp.5perc/hp.pf/str  
*Performance materials on rental*  
*Score 50481504 sale*

**Five Bagatelles** (1964) 14'  
2+pic.2+ca.2+bcl.2+cbn/4331/timp.3-4perc/hp.pf/str  
*Performance materials on rental*

# Work List

# Guntner Schuller

- Five Etudes** (1966) 14' 22'  
3(pic)322/4331/timp.3perc/hp.pf/str  
*Performance materials on rental*  
*Study Score 50235300 sale*
- Four Soundscapes**  
**[Hudson Valley Reminiscences]** (1975) 15'  
3(pic.af1)2+ca.3(bcl)2+cbn/4331/timp.2perc/  
hp.pf(CEL)/str/offstage pic.perc.pf  
*Performance materials on rental*  
*Score 50238710 sale*
- Journey to the Stars** (1962) 15'  
Solo: Narrator (optional)  
1(pic)02(bcl)1/2222/timp.2perc/hp.pf(CEL)/str(no va)  
*Performance materials on rental*
- Jubilee Music** (1984) 24'  
3(2pic.af1)2+ca.2(Ebcl)+bcl.2+cbn/44(btpt)31/  
timp.5perc/pf(CEL).hp/str  
*Performance materials on rental*
- Little Fantasy** (1957) 4'  
1111/2110/timp.perc/str (small complement)  
*Performance materials on rental*
- Of Reminiscences and Reflections** (1993) 20'  
4(2pic.af1).4(2ca).4(2bcl).4(cbn)/6441/timp.5perc/  
hp.pf(CEL)/str  
*Performance materials on rental*  
*Score 50482761 sale*
- The Past is in the Present** (1994) 25'  
4(pic.af1)3+ca.3+bcl.4(cbn)/5441/timp.5perc/  
2hp.pf(CEL)/str  
*Performance materials on rental*
- Ritmica-Melodica-Armonia** (1993) 15'  
3333/4331/timp.2perc/hp.pf/str  
*Performance materials on rental*
- Shapes and Designs** (1969) 14'  
3(2pic)2+ca.2+bcl.3/4331/4perc/hp.pf.CEL/str  
*Performance materials on rental*
- Spectra** (1958) 23'  
2+pic+af1.3(ca)+ca.2+Ebcl+bcl.3+cbn/4431/  
timp.4perc/hp/str(18.16.12.12.9)  
*Performance materials on rental*  
*Score 50239050 sale*
- Symphonic Study** (1947-48, 1964) 9'  
5(2pic)+af1.5.4+bcl.2/6441/timp.perc/CEL.hp/str  
Alt: 3[+]2+ca.2+bcl.2/4331/timp.perc/CEL.hp/str  
*Performance materials on rental*
- Symphony** (1965) 22'  
3(2pic)2+ca.2+bcl.3(cbn)/4431/timp.4perc/hp.pf/str  
*Performance materials on rental*  
*Score 50488543 sale*
- Three Nocturnes** (1973) 15'  
3(pic)3(ca)3(bcl)3(cbn)/4331/timp.4perc/CEL.hp.pf/str  
*Performance materials on rental*
- Triplum I** (1967) 17'  
3(pic)2+ca.2(basset hn)+bcl.3(cbn)/4331/  
timp.5perc/CEL.hp.org.pf/str  
*Performance materials on rental*
- Triplum II [Three Lyric Pieces for Instrumental Trios]** (1975) 20'  
3(pic)3(2ca)2+bcl.3(cbn)/4331/timp.3perc/CEL.hp.pf/str  
*Performance materials on rental*
- Vertige d'Eros** (1945) 14'  
3(af1).232/4331/timp.perc/2hp.CEL.pf/str  
*Performance materials on rental*
- Where the Word Ends** (2007) 25'  
4(2pic.af1).4(2ca).4(Ebcl,2bcl).4(cbn)/  
4+4Wtba(hn).4.4.1/timp.5perc/2hp.pf(CEL)/str  
(16.14.12.10.7)  
*Performance materials on rental*

## Soloist(s) and Orchestra

- Concerto Festivo for Brass Quintet and Orchestra** (1984) 20'  
Solo: Brass Quintet  
3(pic)2+ca.2+bcl.3+cbn/4331/timp.5perc/CEL(pf)hp/str  
*Performance materials on rental*
- Concerto for Alto Saxophone** (1983) 19'  
Solo: Alto Saxophone  
3(2pic)2+ca.2(Ebcl)+bcl.2/4331/timp.3perc/  
hp.pf(CEL)/str  
*Performance materials on rental*
- Concerto for Bassoon and Orchestra [Eine Kleine Fagottmusik]** (1985) 22'  
Solo: Bassoon  
2+pic.2+ca.2(ssx)+bcl.3(cbn)/4331/timp.4perc/  
hp.pf(CEL)/str  
*Performance materials on rental*
- Concerto for Cello and Orchestra** (1945) 18'  
Solo: Cello  
3333/4331/timp.3perc/hp.pf(CEL)/str  
*Performance materials on rental*

- |   |     |  |     |
|---|-----|--|-----|
| <b>Concerto for Contrabassoon</b> (1978)  | 23' | <b>Concerto for Trumpet</b> (1979)   | 22' |
| Solo: Contrabassoon   |     | Solo: Trumpet  |     |
| 3+pic.4(2ca)2+bcl+cbcl.3(cbn)/4441/4perc/cel(pf).hp/str                         |     | 2(pic)2(ca)2(bcl)2/3210/timp.perc/hp.pf/str  |     |
| <i>Performance materials on rental</i>  |     | <i>Performance materials on rental</i>   |     |
|   |     | <i>Reduced Score 50504260 sale</i>   |     |
| <b>Concerto for Doublebass and Chamber Orchestra</b> (1968)                     | 16' | <b>Concerto for Viola</b> (1985)   | 18' |
| Solo: Double bass   |     | Solo: Viola  |     |
| 0+pic+af1.1+ca.0+Ebcl+bcl.1+cbn/0220/cel/str                                    |     | 3(pic,af1)3(ca)2+bcl.3(cbn)/4331/timp.5perc/hp.pf(cel)/str   |     |
| <i>Performance materials on rental</i>  |     | <i>Performance materials on rental</i>   |     |
| <i>Solo Part 50226770 sale</i>  |     |  |     |
| <i>Reduced Score 50226780 sale</i>  |     |  |     |
| <b>Concerto for Flute and Orchestra</b> (1988)                                  | 16' | <b>Concerto for Violin</b> (1976)  | 22' |
| Solo: Flute (piccolo)   |     | Solo: Violin   |     |
| 2(2pic,af1)2+ca.3(ebcl,2bcl)3(cbn)/4331/timp.5perc/epf(cel).hp/str              |     | 4(4pic)3+ca.4(2bcl,asx)3(cbn)/4441/timp.5-6perc/cel.hp.pf/str  |     |
| <i>Performance materials on rental</i>  |     | <i>Performance materials on rental</i>   |     |
| <i>Reduced Score 50483053 sale</i>  |     |  |     |
| <b>Concerto for Horn No. 2</b> (1975-76)  | 17' | <b>Concerto for Violin No. 2</b> (1991)  | 26' |
| Solo: Horn  |     | Solo: Violin   |     |
| 3(2pic,af1)2+ca.2(asx)+bcl.2+cbn/4441/timp.6perc/cel.hp.pf/str                  |     | 3(pic)3(ca)3(bcl)3(cbn)/4331/timp.4perc/hp.pf(cel)/str   |     |
| <i>Performance materials on rental</i>  |     | <i>Performance materials on rental</i>   |     |
| <b>Concerto for Organ and Orchestra</b> (1994)                                  | 15' | <b>Concerto No. 1 for Horn and Orchestra</b> (1943-44)   | 22' |
| Solo: Organ   |     | Solo: Horn   |     |
| 3333/5431/timp.2perc/hp.cel/str   |     | 3333/4331/timp.perc/2hp.cel/str  |     |
| <i>Performance materials on rental</i>  |     | <i>Performance materials on rental</i>   |     |
| <b>Concerto for Piano No. 1</b> (1962)  | 22' | <b>Concerto Quaternio for Four Solo Instruments and Four Orchestral Groups</b> (1984)  | 20' |
| Solo: Piano   |     | Solo: Violin, Flute, Oboe, Trumpet   |     |
| 2+pic.2+ca.2+bcl.2+cbn/4331/timp.3perc/hp/str                                   |     | I: fl+af1.cl.2bn/tpt/pf/8vn/S; II: pic.ob.cl/2hn.tbn/cel/8vn/Mz; III: ob+ca.Ebcl+bcl.bn/hn/hp/8va/T; IV: hn.2tpt.2tbn.tba.bar/timp.4perc/hpd/7vc.5db min   |     |
| <i>Performance materials on rental</i>  |     | <i>Performance materials on rental</i>   |     |
| <b>Concerto for Piano No. 2</b> (1981)  | 30' | <b>Contrasts for Wind Quintet and Orchestra</b> (1961)   | 15' |
| Solo: Piano   |     | Solo: Wind Quintet   |     |
| 4(2pic,af1)2+ca.2+bcl+cbcl(Ebcl)3(cbn)/4341/timp.6perc/hp.cel/str               |     | 2(pic)+af1.2+ca.1+Ebcl+bcl.2+cbn/3331/timp.7perc/hp.pf(cel)/str  |     |
| <i>Performance materials on rental</i>  |     | <i>Performance materials on rental</i>   |     |
| <b>Concerto for Piano Three Hands (Two Pianos and Chamber Orchestra)</b> (1990) | 25' | <b>Deaī (Encounters)</b> (1978)  | 35' |
| Solo: 2 Pianos  |     | Solo: 2 Sopranos, Mezzo Soprano, Alto, Tenor, 2 Baritones, Bass  |     |
| 2(pic).2(ca).2(Ebcl).2/2210/timp.2perc/hp/str(6.6.4.3.2)                        |     | Three orchestras and conductors -- Orch I (on-stage): 4(pic)4(ca)6(2bcl,cbcl)4(cbn)/5541/timp.2perc/cel.2hp.pf/str Orch II (off-stage): 222(bcl)2/2220/perc/hp/str Orch III (off-stage): 2(pic)2(ca)22/2210/perc/cel/str |     |
| <i>Performance materials on rental</i>  |     | <i>Performance materials on rental</i>   |     |
| <b>Concerto for String Quartet and Orchestra</b> (1988)                         | 22' | <b>Diptych for Brass Quintet and Orchestra</b> (1964-67)   | 8'  |
| Solo: String Quartet  |     | arr. by Gunther Schuller,  |     |
| 3(pic,af1).3+ca.2+bcl.3(cbn)/443(tba)0/perc/hp.pf.cel/str                       |     | Solo: Brass Quintet  |     |
| <i>Performance materials on rental</i>  |     | 3(pic)2+ca.2+bcl.3/4221/timp.perc/hp/str   |     |
|   |     | <i>Performance materials on rental</i>   |     |

- Five Shakespearean Songs** (1964) 15'  
Text: William Shakespeare  
Solo: Baritone  
2+pic.2+ca.2+bcl.2+cbn/4331/timp.perc/hp.pf/str  
*Performance materials on rental*
- Journey into Jazz** (1962) 15'  
Text: Gunther Schuller and Nat Hentoff  
Solo: Narrator, Jazz Quintet: asx+tsx/tpt/dm/db  
1111/1100/perc/hp/str  
*Performance materials on rental*  
*Score 50238010 sale*
- Lament for M** (1994) 6'  
Solo: Tenor saxophone  
1000/0000/dmkit/hp/str (4.4.3.3.2)  
*Performance materials on rental*
- Movements** (1962) 14'  
Solo: Flute  
str  
*Performance materials on rental*
- Museum Piece for Renaissance Instruments and Orchestra** (1970) 19'  
Solo: 2srec+arec.2s shawm.a,t,b crumhorn./2cor.sack-but/hpd.lu.regal/3vadv  
2(pic,af1)2(ca)2+bcl.2/4231/2-3perc/cel.pf.hp/str  
*Performance materials on rental*
- Recitative and Rondo** (1954) 11'  
Solo: Violin  
22+ca.2+bcl.2+cbn/4331/2perc/hp.pf/str  
Alt: piano  
*Performance materials on rental*
- Six Early Songs** (1944-45) 18'  
Text: (German) Li-Tai-Pe/paraphrases by Klabund  
Solo: Soprano  
3343/4221/timp.perc/hp.cel.pf/str  
*Performance materials on rental*
- Threnos** (1963) 18'  
Solo: Oboe  
3(2pic)3(ca)2(bcl)2+cbn/4331/timp.3perc/hp/str  
*Performance materials on rental*
- Variants** (1960) 18'  
Solo: Jazz quartet: vib, pf, db, dm  
2(pic).133/4331/2perc/str  
*Performance materials on rental*
- The Visitation, Suite from the Opera** (1970) 41'  
Solo: Jazz Ensemble: tpt.tbn.pf.dm.db  
3(pic)3(ca)3(2Ebcl,bcl)+asx(barsx)+tsx(bcl)3(cbn)/  
4331/timp.3perc/cel.hp.2pf[1 tuned, 1 tuned quarter tone  
high, 1 player]/str/tape  
*Performance materials on rental*

## Works for Band/Wind/Brass Ensemble

- Blue Dawn into White Heat** (1997) 10'  
5.3.14.5sx.2/4.5.4+euph.1/dm.7perc/pf.gtr/db  
*Performance materials on rental*
- Fanfare for St. Louis** (1968) 6'  
3333/4431/timp.perc  
*Performance materials on rental*
- Festive Music** (1992) 4'  
2+pic.3+ca.2+Ebcl+bcl.3+cbn/4441/timp.5perc/hp.pf  
*Performance materials on rental*
- Headin' Out, Movin' In**  
Solo: Tenor Saxophone  
jazz ensemble  
*Performance materials on rental*
- In Praise of Winds,  
Symphony for Large Wind Orchestra** (1981) 25'  
9(pic,af1)+2pic.3(ca)+ca.13+Ebcl+2acl+2bcl+2Ebccl+2Bb  
cbcl.sx+2asx+2tsx+barsx.2+cbn/8.9.8.5+2bar/timp.4perc(  
timp)/hp.cel/2db  
*Performance materials on rental*
- Jumpin' in the Future** (1948) 5'  
fl, ob, sss, asx, tsx, 2 hn, tpt, tbn, tba, pf, db, dm  
*Performance materials on rental*
- Meditation for Concert Band** (1963) 6'  
3+pic+af1(fl).2+ca.3+Ebcl+2acl+2bcl+cbcl.2asx+tsx+barsx.  
2/4.2+2cor.3.1+2bar/timp.2perc/db  
*Score and Part(s) 50243940 sale*  
*Score 50488898 sale*
- On Winged Flight** (1989) 13'  
concert band; 3 vc  
*Performance materials on rental*  
*Score and Part(s) 50481244 sale*  
*Score 50481245 sale*
- Refrains** (2006)  
12tba+10euph/2perc  
*Performance materials on rental*

**Study in Textures for Concert Band** (1966) 7'  
concert band  
*Performance materials on rental*  
*Score and Part(s) 50244320 sale*  
*Score 50244330 sale*

**Symphony for Brass and Percussion** (1950) 10'  
0000/464+2bar.2/timp.2perc  
*Performance materials on rental*

## Large Ensemble (7 or more players)

**Automation (music for a real  
or imagined film score)** (1962) 7'  
fl, cl(bcl), bn, hn, 2 perc, hp, pf, vn, db  
*Performance materials on rental*

**Bright and Sassy** (1997) 6'  
2 hn, tpt in C, tpt in Bb, 2 tbn, tba  
*Performance materials sold by Rental Library*

**Chimeric Images** (1988) 15'  
fl, cl, bn, tpt, hn, hp, pf(CEL), vn, va, vc, db  
*Performance materials on rental*

**Double Quintet  
for Wind and Brass Quintets** (1961) 12'  
1111/2211  
*Performance materials on rental*

**Grand Concerto  
for Percussion and Keyboards** (2005) 23'  
8 perc, hp, cel, pf  
*Performance materials on rental*

**Hommage à Rayechka** (1990) 8'  
8 vc or multiples (preferably 24, 32, or 40)  
*Performance materials on rental*

**Lines and Contrasts** (1960) 10'  
16 horns  
*Performance materials on rental*

**Octet** (1979) 40'  
cl, bn, hn, 2 vn, va, vc, db  
*Study Score 50481311 sale*  
*Set of Parts 50481579 sale*

**Tear Drop** (1967) 12'  
fl, cl(asx[=barsx]), hn, tpt, tbn, tba, gtr, db, dm  
*Performance materials on rental*

**Transformation** (1956) 6'  
fl, cl, tsx, bn, hn, tbn, vib, hp, pf, db, perc[=dm]  
*Performance materials on rental*

**Tre invenzioni for Chamber Ensembles** (1972) 18'  
Five groups, without strings, drawn from: pic.fl.ob.Ebcl.cl  
ll: ca.bcl.asx.bn.cbn llI: pic.tpt.2tpt.tbn.tbtn IV:  
2hn.fluegel.bar.tba V: hp.kbd.glock.cel.hpd.pf  
*Performance materials on rental*

## Soloist(s) and Large Ensemble (7 or more players)

**Diptych for Brass Quintet  
and Concert Band** (1964) 8'  
Solo: Brass Quintet  
concert band  
*Performance materials on rental*

**Eine Kleine Posaunenmusik** (1980) 16'  
Solo: Trombone  
2(pic)2(ca)2+bcl[=cbcl].1/2231/perc/hp.pf[=cel]/db  
*Performance materials on rental*  
*Reduced Score 50480051 sale*

**A Medieval Christmas** 46'  
transcribed and edited by Gunther Schuller,  
Solo: approximately 8 singers  
approximately 12 instrumentalists  
*Performance materials on rental*

**Six Renaissance Lyrics** (1962) 15'  
Text: Shakespeare, de la Cruz, von der Vogelweide,  
Petrarch, Ronsard, Michelangelo  
Solo: Lyric Tenor  
fl, ob, pf, vn, va, vc, db  
*Study Score 50238690 sale*

**Song and Dance** (1990) 16'  
Solo: Violin  
4+2pic+afI.2+ca.3+Ebcl+bcl+cbcl.2asx+tsx+barsx.2+cbn/  
444+2euph.2/timp.perc/hp.pf/db  
*Performance materials on rental*

## Works for 2-6 Players

**Aphorisms** (1967) 14'  
Solo: Flute  
vn, va, vc  
*Score and Part(s) 50226750 sale*

**Bouquet for Collage** (1988) 16'  
fl, cl, perc, pf, vn, vc

**Brass Quintet No. 2** (1993) 14'  
hn, 2 tpt, tbn, tbtn  
*Performance materials sold by Rental Library*

<b>Duo Sonata</b> (1949) cl, bcl <i>Score and Part(s) 50226400 sale</i>	11'	<b>Quodlibet</b> (2001) ob, hn, vn, vc, hp <i>Performance materials sold by Rental Library</i>	
<b>Duologue</b> (1983) vn, pf <i>Score and Part(s) 50504270 sale</i>	23'	<b>Sextet</b> (1994) Solo: Piano (left hand) fl, ob, cl, bn, hn <i>Performance materials sold by Rental Library</i>	14'
<b>Fantasia Concertante</b> (1946) 2ob(2ca), ob, pf <i>Performance materials sold by Rental Library</i>	11'	<b>Sonata</b> (1999) asx, pf <i>Performance materials sold by Rental Library</i>	9'
<b>Five Impromptus</b> (1989) ca, 2vn, va, vc <i>Performance materials sold by Rental Library</i>	12'	<b>Sonata Serenata</b> vc, cl, vn, pf <i>Score and Part(s) 50500120 sale</i>	
<b>Five Moods</b> (1973) 4 tba <i>Score and Part(s) 50482091 sale</i>	11'	<b>String Quartet No. 2</b> (1965) 2vn, va, vc <i>Performance materials sold by Rental Library</i>	19'
<b>Impromptus and Cadenzas</b> (1990) ob(ca), cl, bn, hn, vn, vc <i>Performance materials sold by Rental Library</i>	20'	<b>String Quartet No. 4</b> (2002) 2vn, va, vc <i>Performance materials sold by Rental Library</i>	20'
<b>Lifelines</b> (1960) fl, perc, gtr <i>Performance materials sold by Rental Library</i>	7'	<b>Symbiosis</b> (1957) vn, pf, perc, dancer <i>Score and Part(s) 50239280 sale</i>	18'
<b>Music for Brass Quintet</b> (1961) hn, 2tp, tbn, tba <i>Score and Part(s) 50223920 sale</i>	12'	<b>Trio</b> (1948) ob, hn, va <i>Set of Parts 50226110 sale</i>	11'
<b>Music for Young People</b> (1991) fl, pf, vn, vc <i>Performance materials sold by Rental Library</i>	10'	<b>A Trio Setting</b> (1990) cl, vn, pf <i>Performance materials sold by Rental Library</i>	10'
<b>Nocturne</b> (1942) hn, pf	6'	<b>Woodwind Quintet</b> (1958) fl, ob, cl, bn, hn <i>Score and Part(s) 50225510 sale</i>	15'
<b>Ohio River Reflections</b> (1999) horn, violin, viola, piano <i>Performance materials sold by Rental Library</i>	18'		
<b>On Light Wings</b> (1984) vn, va, vc, pf <i>Performance materials sold by Rental Library</i>	20'		
<b>Paradigm Exchanges</b> (1991) flute, clarinet, violin, cello, piano <i>Performance materials sold by Rental Library</i>	22'		
<b>Piano Trio</b> (1984) vn, vc, pf <i>Performance materials sold by Rental Library</i>			
<b>Quintet for Horn and Strings</b> (2009) hn, 2vn, va, vc <i>Performance materials sold by Rental Library</i>	18'		
		<b>Solo Works (excluding keyboard)</b>	
		<b>Episodes</b> (1964) cl <i>Score 50226740 sale</i>	7'
		<b>Fantasy</b> (1994) hp <i>Score 50488900 sale</i>	14'
		<b>Fantasy Suite</b> (1994) guitar <i>Performance materials sold by Rental Library</i>	14'

**Marimbology** (1993) 12'  
marimba  
*Performance materials sold by Rental Library*

## Solo Keyboard(s)

**Orgelwalzer** (1986) 15'  
org  
*Performance materials sold by Rental Library*

**Sonata-Fantasia** (1992) 12'  
pf  
*Performance materials sold by Rental Library*

**Symphony** (1981) 25'  
org  
*Performance materials sold by Rental Library*

**Triptych** (1976) 32'  
organ  
*Score 50227210 sale*

## Chorus a cappella / Chorus plus 1 instrument

**Magnificat and Nunc Dimittis** (1994) 5'  
Chorus: SATB  
organ  
*Performance materials sold by Rental Library*

## Chorus and Orchestra/Ensemble

**The Black Warrior** 25'  
Text: based on texts by Martin Luther King  
Solo: Narrator  
Chorus: SATB chorus  
2+pic.2+ca.2+Ebcl+bcl.2+cbn/4441/timp.perc/  
pf.cel.org.hp/str  
*Performance materials on rental*

**Mondrian's Vision** (1994) 15'  
Text: (English) Piet Mondrian  
Chorus: Chamber Choir  
111.asx.1/1110/3perc/pf/str  
*Performance materials on rental*

**Music for a Celebration** (1980) 6'  
Chorus: SATB & Audience  
3(3pic)2+ca.2+bcl.2+cbn/4331/timp.6perc/  
cel.hp[+].pf/str(min 12.12.8.8.6)  
offstage: 2hn.4tpt.2tbn  
*Performance materials on rental*  
*Score 50488729 sale*

**Poems of Time and Eternity** (1972) 13'  
Chorus: SATB chorus  
fl(pic), cl, bn, hn, vn, va, vc, pf  
*Performance materials on rental*

**The Power Within Us, Oratorio** (1971) 25'  
Text: N. Long  
Solo: Baritone, Narrator  
Chorus: SATB  
32+ca.2+bcl.3(cbn)/4331/timp.5perc/cel.hp.org.pf/str  
*Performance materials on rental*  
*Score 50238570 sale*

**Sacred Cantata (Psalm 98)** (1966) 19'  
Chorus: SATB  
1101/1110/2perc/org/str(1.0.0.1.1)  
*Performance materials on rental*

**Thou Art the Son of God** (1987) 10'  
Text: (English) Matthew 14: 22-33  
Chorus: SATB chorus  
fl(pic), ca, cl, hn, tpt, perc, vn, vc, db  
*Performance materials on rental*

## AVAILABILITY

### HIRE (RENTAL)

The rental agent in your territory is the source for performance materials. Not every composition is available in every territory. Full scores, vocal scores, piano reductions, and libretti may be for sale by music dealers.

For instructions, order forms, and territories, go to these pages:

- <http://digital.schirmer.com/rental>

Please allow sufficient time in ordering (generally one month) to avoid being assessed rush fees.

### SALE

These performance materials are sold by music dealers and online stores, including:

- [www.HalLeonard.com](http://www.HalLeonard.com)  
(Customers for the world except the UK, Australia, and New Zealand)
- [www.MusicRoom.com](http://www.MusicRoom.com)  
(Customers within the UK, Australia, and New Zealand)

### SALE FROM RENTAL LIBRARY

The G. Schirmer Rental Library sells Print-on-Demand scores and parts that are not available for sale from retail outlets.

- <http://digital.schirmer.com/pod>

Use the following *Word DOC* or *Acrobat PDF* forms to submit Print-on-Demand orders. Complete the form, then send via e-mail, postal mail or fax. Instructions are provided on the form:

- <http://digital.schirmer.com/pod/Schirmer-POD.doc> (fill out on computer)
- <http://digital.schirmer.com/pod/Schirmer-POD.pdf> (print and fill out by hand)

### UNAVAILABLE

Due to composer revisions, performer exclusivity, or other reasons, a work may not be available.

For more information on the music of Gunther Schuller, please visit [www.musicsalesclassical.com](http://www.musicsalesclassical.com) or contact:

USA

**G. Schirmer, Inc.**  
schirmer@schirmer.com  
phone 212 254 2100

UK

**Chester Music Limited**  
promotion@musicsales.co.uk  
phone 44 20 7612 7400

Denmark

**Edition Wilhelm Hansen AS**  
ewh@ewh.dk  
phone 45 33 117888

France

**Chester Music France**  
chesterfrance@musicsales.co.uk  
phone 33 1 53 24 68 52

Germany

**Chester Schirmer Berlin**  
chester.schirmer.berlin@musicsales.co.uk  
phone 49 30 223 220 19

Spain

**Unión Musical Ediciones SL**  
unionmusicalediciones@musicsales.co.uk  
phone 34 91 308 4040

Australia

**Music Sales Pty. Ltd.**  
matt.bailey@musicsales.com.au  
Tel: 61 2 9299 8877

Japan

**K K Music Sales**  
rights@shinko-music.jp  
phone 81 3 3292 2861



G. Schirmer, Inc.  
Part of the Music Sales Group  
Publishing today's leading composers  
and the classic names of the 20th century.

*The Music Sales Group*